

2531-22

Pin Code: 2531DN-0070

⚠ Must read before use. Failure to do so can result in serious injury or death.

Vor Gebrauch unbedingt lesen. Andernfalls sind schwere Verletzungen oder Todesfälle möglich. **HIER SCANNEN.**

À lire absolument avant toute utilisation. Le non-respect de cette consigne peut entraîner des blessures graves, voire mortelles. **SCANNER ICI.**

Leer antes de usar. El no hacerlo puede resultar en lesiones graves o muerte. **ESCANEE AQUÍ.**

Lezen voor gebruik. Het nalaten hiervan kan leiden tot serieuze verwondingen of de dood. **SCAN HIER.**

Da leggere prima dell'uso. In caso contrario, possono verificarsi lesioni gravi o morte. **SCANSIONA QUI.**



SCAN HERE




Pi Prime Pizza Oven Manual

SAFETY/LEGAL DISCLAIMER

Read and follow all warnings and instructions before assembling and using the appliance. Follow all warnings and instructions when using this appliance. Keep this manual for future reference. Failure to follow these instructions could result in fire, explosion or burn hazard which could cause property damage, personal injury or death. Solo Stove does not accept any responsibility, legal or otherwise, for the incidental or consequential damage to property or persons resulting from the misuse of this product. Solo Stove shall in no event be liable for any special, indirect, consequential, or other damages of any nature whatsoever in excess of the original purchase price.


This appliance is not designed for Commercial use.

**DANGER**

If you smell gas:

- **Shut off propane tank gas valve**
- **Shut off Control Knob**
- **Extinguish any open flame**
- **If odor continues, keep away from appliance and immediately call your fire department**

Failure to follow these instructions could result in fire, explosion or burn hazard which could cause property damage, personal injury or death.

**DANGER**

- **Never operate this appliance unattended**
- **If a fire should occur, keep away from the appliance and immediately call your fire department. Do not attempt to extinguish an oil or grease fire with water.**

Failure to follow these instructions could result in fire, explosion or burn hazard which could cause property damage, personal injury or death.




CARBON MONOXIDE WARNING

This appliance can produce carbon monoxide which has no odor. Using it in an enclosed space can kill you. NEVER use this appliance in an enclosed space such as a camper, tent, car or house.

- **FOR OUTDOOR USE ONLY.** Combustion by-products from using this device contain carbon monoxide, an odorless gas that can kill. Do NOT use in a building, garage, or enclosed area. This appliance must be used outdoors in a well-ventilated area.
- Inspect all gas connections frequently and at every gas cylinder exchange. Use a solution of 1 part liquid dish soap to 1 part water to coat and inspect all fittings for leaks. Small bubbles or streams in solution are some of the indications that a leak is present. If a leak is found, turn off all gas valves and wait 10 minutes. Re-tighten all fittings and repeat process.
- Inspect hoses for abrasion, cuts, cracks, and other signs of damage frequently and at every use. If a damaged hose is found, contact Solo Stove Customer Support at 817-900-2664 for replacement parts.
- Do NOT store any flammable liquids or gas cylinders not directly connected to this appliance within 25 feet of this appliance.
- NEVER use an open flame to check for leaks. When checking for leaks, ensure there are no open flames, open frame motors, welders, or other potential sources of spark or ignition within 25 feet of the Pi Prime.
- Do NOT attempt to modify or service the valve assembly, igniter, burner, or other parts of the Pi Prime. Doing so could cause bodily harm and/or property damage or fire.
- Do NOT attempt to clean out the burner or orifice with sharp objects.
- Do NOT submerge the Pi Prime in water or spray cleaners directly onto the unit. Always spray onto a clean, lint-free towel first when cleaning the unit.
- Do NOT use with any other fuels other than propane or with a regulator other than the one included with the Pi Prime.
- Do NOT use this appliance in or on a boat or RV.
- Do NOT touch exterior surfaces while in use. Exterior surfaces may be hot. Use heat-resistant gloves.

- Do NOT use on combustible surfaces. Use only on a level, stable surface.
- Keep away from small children and pets.
- Do NOT move the appliance while in use.
- When the appliance is not in use, the gas must be turned off at the supply cylinder.
- Storage of the appliance indoors is permissible only if the gas supply cylinder is disconnected and removed from the appliance. Cylinders MUST be stored outdoors and out of reach of children and shall not be stored in a building, garage, or any other enclosed area.
- All handling and cleaning should be done when the Pi Prime has cooled to room temperature.
- Do NOT attempt to tighten or loosen fittings during operation.
- Do NOT use any other fuels in addition to propane gas during operation.
- Do NOT allow the Pi Prime to be exposed to direct rain or snow.
- Avoid placing extremely cold or frozen foods on the pizza stone or spraying the stone with cold liquids when hot. Damage to the stone may occur.
- Use care when handling the stone. The stone is fragile and may break or chip if dropped or hit. Do not use a damaged pizza stone. If a replacement is needed, use only Solo Stove genuine replacement part. Always allow the stone to cool before handling
- The use of alcohol, prescription drugs, or non-prescription drugs may impair the ability to properly assemble, inspect, or operate this appliance.
- Do NOT use the appliance as a heater.

PRODUCT INFORMATION

Solo Brands Europe B.V. Geysendorfferweg 15, Unit DC2, 3088 GJ Rotterdam, The Netherlands				
Appliance Name	PI PRIME PIZZA OVEN			
Model/Type No.	PIZZA-OVEN-PRIME			
Trade Name	Solo Brands Europe BV			
Total Nominal Heat Input	4.4 kW (Butane: 320 g/h, Propane: 314 g/h)			
Serial No.				
Gas Category	<input type="checkbox"/> L3+2B-30/37	<input type="checkbox"/> L3B/P30	<input type="checkbox"/> L3B/P50	<input type="checkbox"/> L3B/P37
Injector Size	1.02mm	1.02mm	0.88mm	0.96mm
Gas Type	Butane	Propane	Butane, Propane or their mixtures	
Gas Pressure	28-30 mbar	37 mbar	28-30 mbar	50mbar 37mbar
Destination countries	BE, FR, IT, IE, GB, GR, PT, CY, CZ, LT, CH, SI, LV, SK, TR		AT, CH, DE, SK	PL
Use outdoors only. Read the instructions before using the appliance. WARNING: accessible parts may be very hot. Keep young children away.				
<div> 2531-22 Pin Code: 2531DN-0070</div>				

Modifications of any kind, including removal of burner housing tags and labels, will void compliance of the appliance with these certifications.

⚠ IMPORTANT PROPANE CYLINDER USAGE AND SAFETY GUIDELINES

- For use with Propane gas cylinders up to 20lb (9.0kg) Propane capacity with QCC-1 connections. Cylinders in excess of 2.2lb (1.0kg) capacity must include a collar to protect the cylinder valve.
- Propane gas cylinders must be constructed and marked in accordance with the specifications for Propane gas cylinders. US Department of Transportation (DOT) or the Standard for Cylinders, Spheres and Tubes for the Transportation of Dangerous Goods, CAN/CSA-B339
- The installation must conform with local codes or, in the absence of local codes, with the National Fuel Gas Codes, ANSI Z223.1/NFPA 54, Storage and Handling of Liquefied Petroleum Gases, ANSI/NFPA 58, National Propane Installation Code, CSAB149.1.
- Propane gas cylinder systems must be arranged for vapor withdrawal. Refer to local codes and ordinances for applicable specifications.
- If pressure testing is required, the appliance must be isolated from the gas supply system by closing all manual shutoff valves during any pressure testing of the gas supply system at test pressure equal to or less than 1/2psi (3.5kpa)
- Do not fill propane cylinders beyond 80 percent full.
- When not in use, propane cylinders should be stored outdoors out of direct exposure to sun, rain and snow.
- Place dust cap on propane cylinder valve outlet whenever the cylinder is not in use. Only install the type of dust cap on the cylinder valve outlet that is provided with the cylinder valve. Other types of caps or plugs may result in leakage or damage.
- Do not store propane cylinders within 25ft of open fire or sparks.

⚠ CAUTION

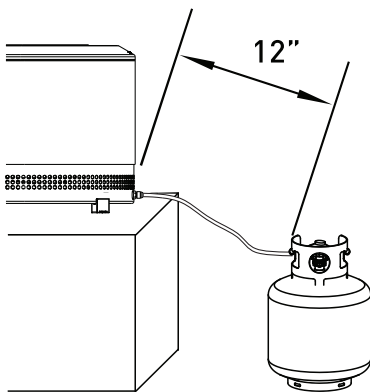
1. Do NOT store a spare LP gas cylinder under or near this appliance;
2. NEVER fill the cylinder beyond 80 percent full
3. If the instructions in (1) and (2) are not followed exactly, a fire causing death or serious injury may occur.

⚠ CAUTION

- The gas pressure regulator provided with this appliance must be used. Replace only with Solo Stove part# PI-REG

⚠ WARNING

- Minimum distance between appliance and cylinder is 12 inches (31 cm). Minimum clearance from sides and back of the appliance to wall is 36 inches (92 cm). Do not use under overhead construction. Failure to follow these instructions could cause the propane cylinder to overheat and vent Propane gas which could ignite causing serious personal injuries or property damage.
- Cylinder must be positioned so that it does not present a tripping hazard. This could cause damage to the propane cylinder, fuel supply hose and/or pull the pizza oven off the tabletop, causing serious personal injuries or property damage. Exercise extreme caution around the Pizza Oven, fuel hose and propane cylinder when in use. Keep children and pets away at all times.



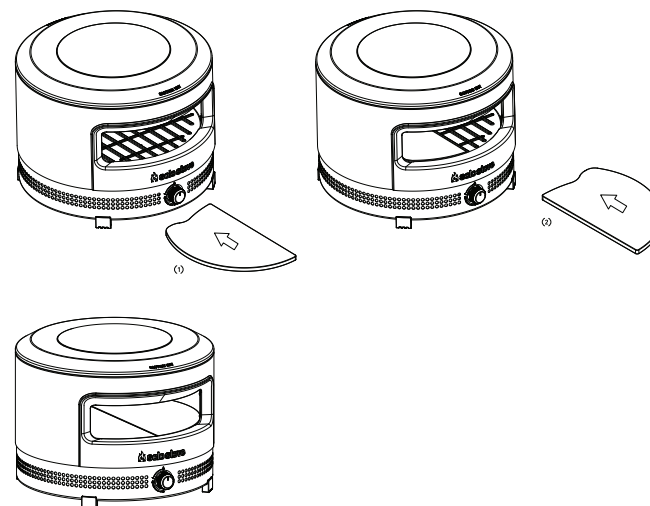
ASSEMBLY

Before assembly, remove all items from the box, carefully unwrap, and inspect for damage.

Step 1 – Place Pi Prime on a safe, sturdy surface.

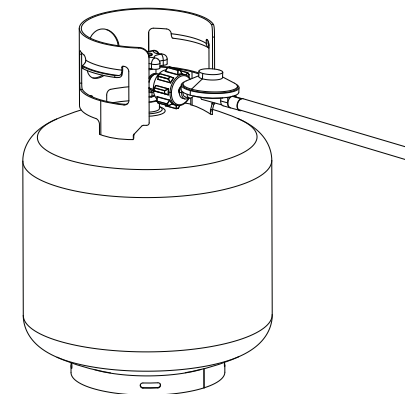
Step 2 – Install Pizza Stone Halves

Insert one pizza stone half through the front opening of the oven body, matching the orientation shown below. Once inside the oven, move the pizza stone half completely to the side to give room for the second half. Each pizza stone half should lay flat on the metal support tray and will not rest on top of each other when installed correctly.



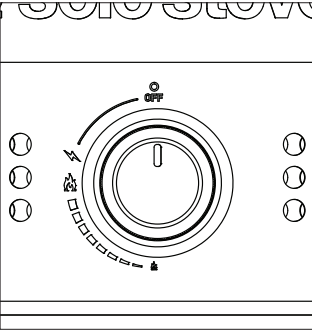
Step 3 – Attach Pi Prime Fuel Hose to Propane Cylinder

- Inspect the regulator connection and the Propane cylinder connection for dirt, debris, or damage. If any damage is found DO NOT INSTALL.
- Align the regulator connector with the cylinder fitting and hand tighten into place. Do NOT over tighten or use tools to tighten. This may damage components and lead to potential gas leaks.
- Test all connections for leaks.
- Keep the fuel supply hose aware from any heated surface. Minimum distance between fuel hose and Pizza Oven is 3 inches (8cm)



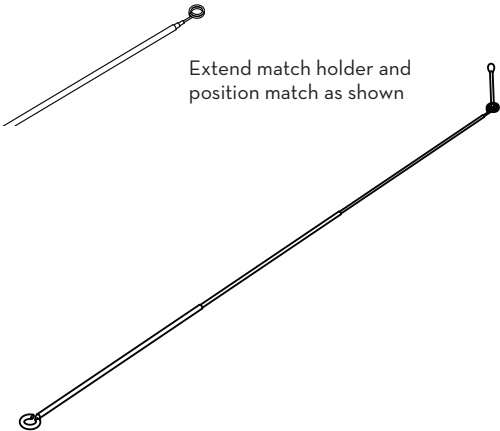
Step 4 - Lighting and Usage

- Ensure the Pi Prime Control Knob is fully in the “Off” position
- Turn the propane cylinder valve to the “On” position
- To light the Pi Prime, push the control knob in and turn counterclockwise until a ‘click’ is heard. Visually inspect the burner through the front door opening to confirm if the flame is lit
- If the flame does not light, turn the knob to the “Off” position and wait 5 minutes. Repeat the lighting process.
- Once the burner is lit, confirm that the flame is evenly distributed throughout the burner openings. Flame should appear blueish at the base with yellow tips.
- Allow the oven to heat up for 15 minutes at 100%.
- At first use, allow the oven to burn for 30 additional minutes to ensure any residual factory coatings are removed.
- Adjust the knob clockwise or counterclockwise until the desired interior temperatures are found. A handheld Solo Stove IR Thermometer is recommended when using the Solo Stove Pi Prime
- Turn off the control knob and propane cylinder valve completely after use.
- The appliance will be hot during use and afterward. Allow to completely cool before attempting to handle.



MATCH HOLDER INSTRUCTIONS FOR USE

- A match holder is provided that can be used in place of the self-lighting feature of the oven. USE extreme care when using the match holder.
1. The match holder must be extended to full length when used. It is extended by pulling the two ends of the match holder away from each other.
 2. Wooden matches work best. Light the match and position it into the spiral end of the match holder as shown. The match should be positioned so that it binds up between the spiral layers and points away from the match holder.
 3. Turn the control knob to 3/4 position.
 4. With the match holder extended, insert the lit match into the pizza oven until it is over the burner tube. Tube should light.
 5. Do NOT allow the gas to run for more than 5 seconds before inserting the match holder into the pizza oven. Tube should immediately light.
 6. If more than 5 seconds pass between the time when control knob is turned to 3/4 position and match is positioned over Pi Prime tube, immediately turn the control knob off and wait 5 minutes before trying again.



	WARNING! Do NOT use a Front Door when using the Pi Prime. Serious injury, Carbon Monoxide poisoning, or explosion could occur
	WARNING! Do NOT use in windy conditions. Flame blowout may occur which could lead to propane gas buildup and risk of explosion or fire

OPERATION AND CARE GUIDELINES

- During use, routinely check the condition of the flame. If at any time the flame goes out, turn the control knob off and then the propane cylinder valve off and wait at least 5 minutes before attempting to relight or change out propane cylinder.
- Stainless steel is a strong and corrosion-resistant steel that will slowly discolor and patina over time. This is normal and should not be construed as a defect. This process is accelerated by heat, which is why different areas of the Pi Prime may patina or discolor differently than others. This discoloration is both on and in the surface of the steel, so it is not something that can be completely cleaned off. Do not attempt to use abrasive cleaners or pads to clean the Pi Prime, as these could scratch the stainless steel surface. Dirt and debris can be cleaned off using a damp, clean, lint-free towel. Cleaning should be done in the direction of the brushed grain.
- Care should be taken not to put fatty foods or oils directly onto the pizza stone. The pizza stone is porous and, over time, will naturally form a buildup from use. Fatty foods or oils will accelerate this, could cause smells or unusual smoke from the pizza oven, and possibly lead to a fire. If a fire does occur, immediately shut off the control knob and propane cylinder valve until the fire is out. Call the Fire Department if flames cannot be extinguished. Do NOT use water to put out fires caused by fatty foods or oils, as it may cause the fire to spread.

MAINTENANCE AND CARE

- Keep appliance area clear and free of debris and combustible materials.
- Keep gas burner openings and vent locations clear of obstructions.
- Frequently check the flame during use.
- Inspect internal areas of the burner to ensure they are clear from insects and debris.



 **solo stove**

v1.0